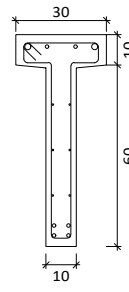
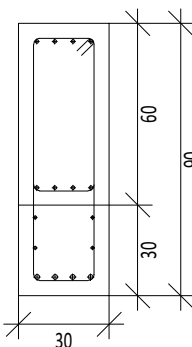


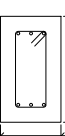
Viga de Cobertura do Galpão



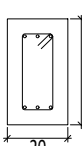
Viga de Amarração (Cinta Pré-Moldada): 7,50r



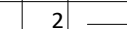
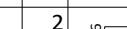
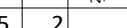
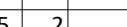
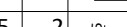
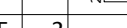
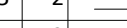
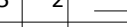
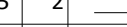
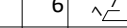
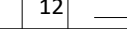

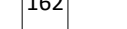

Viga Baldrame / Caixaão Perdido (Moldada In-Loco): 5,50m



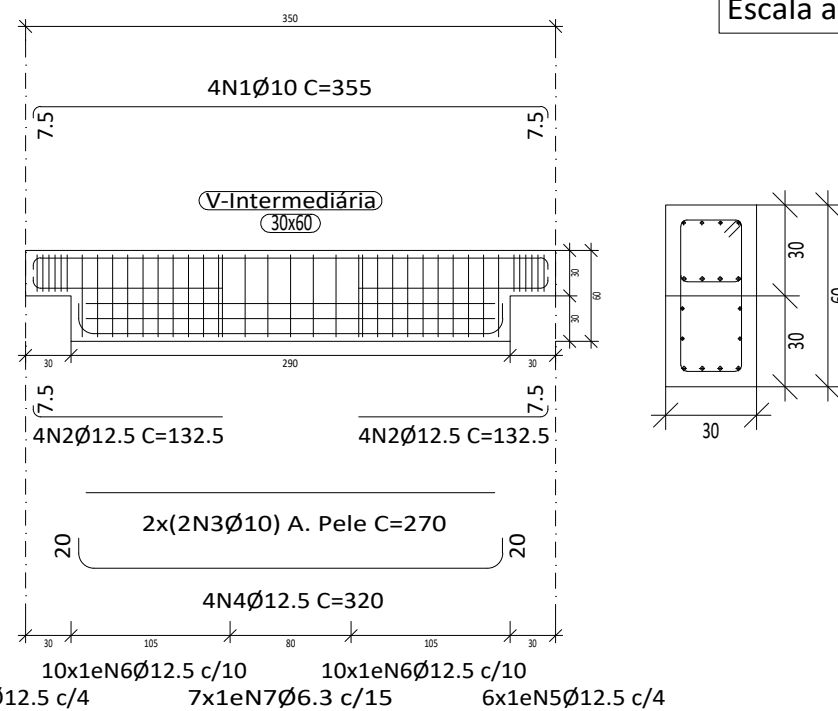
Viga Baldrame / Caixaão Perdido (Moldada In-Loce): 7,50r



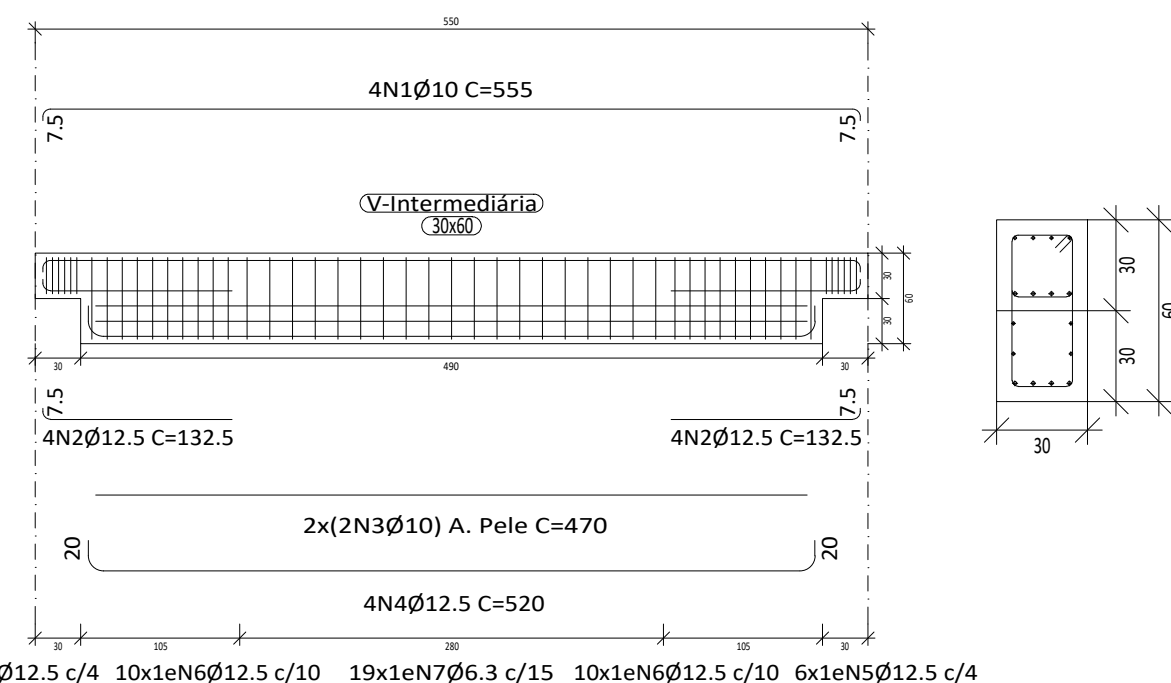
Maquete 3D
Sem Escala

Elemento	Pos.	Diam.	Q.	Esquema (cm)	Comp. (cm)	Total (cm)	CA-50 (kg)	CA-60 (kg)	
Viga de Cobertura da Edificação	1	Ø20	2		1082	2164	53.4		
	2	Ø20	2		1083	2166	53.5		
	3	Ø12.5	2		910	1820	17.6		
	4	Ø12.5	2		770	1540	14.8		
	5	Ø12.5	2		450	900	8.7		
	6	Ø12.5	2		755	1510	14.6		
	7	Ø12.5	2		640	1280	12.3		
	8	Ø12.5	2		625	1250	12.0		
	9	Ø5	6		225	1350		2.1	
	10	Ø5	12		600	7200		11.1	
	11	Ø5	6		580	4380		6.8	
	12	Ø5	162			171	27702		42.66
	13	Ø12.5	2		1082	2164	20.84		
	14	Ø12.5	2		1083	2166	20.86		
Total+10%:							251.5	69.0	
							(x5): 257.5	345.0	
(x5):	Ø5:	0.0	345.0			Ø5:	0.0	69.0	
	Ø12.5:	669.0	0.0			Ø12.5:	133.9	0.0	
	Ø20:	588.0	0.0			Ø20:	117.6	0.0	
	Total:	1257.5	345.0			Total:	251.5	69.0	





Níveis Variados			
Desenho de vigas/cintas			
Concreto: C40, em geral			
Aço das barras: CA-50 e CA-60			
Aço dos estribos: CA-50 e CA-60			
Escala vigas 1:50			
Escala seções 1:25			
Escala aberturas 1:25			



Viga de Amarração (Cinta Pré-Moldada): 5,50m



Elemento	Pos.	Diam.	Q.	Esquema (cm)	Comp. (cm)	Total (kg)	CA-50 (kg)	CA-60 (kg)
Viga de Amarração (Cinta): 3,50m	1	Ø10	4		355	1420	8.8	
	2	Ø12.5	2x4		132.5	1160	10.2	
	3	Ø10	2x2		270	1080	6.7	
	4	Ø12.5	4		320	1280	12.3	
	5	Ø12.5	2x6		150	1800	17.4	
	6	Ø12.5	2x10		210	4200	40.5	
	7	Ø6.3	7		210	1470	3.6	
					Total+10%:	109.5		
					(x12):	1314.0		
	(x12)	Ø5:	0.0	0.0	Ø5:	0.0	0.0	
		Ø6.3:	48.0	0.0	Ø6.3:	4.0	0.0	
		Ø10:	205.2	0.0	Ø10:	17.1	0.0	
		Ø12.5:	1062.0	0.0	Ø12.5:	88.5	0.0	
		Ø16:	0.0	0.0	Ø16:	0.0	0.0	
		Total:	1314.0	0.0	Total:	109.5	0.0	

Elemento	Pos.	Diam.	Q.	Esquema (cm)	Comp. (cm)	Total (cm)	CA-50 (kg)	CA-60 (kg)
Viga Baldrame / Caixa Perdido: 7,50m	1	Ø10	2		830	1660	10.3	
	2	Ø10	3		830	2490	15.4	
	3	Ø10	2		225	450	2.8	
	4	Ø5	50		80	4000		6.2
	Total+10%:						31.4 (x16): 502.4	6.9 110.4
(x16):	Ø5.3:	0.0	110.4		Ø5:	0.0	6.9	
	Ø6.3:	0.0	0.0		Ø6.3:	0.0	0.0	
	Ø10:	502.4	0.0		Ø10:	31.4	0.0	
	Ø12.5:	0.0	0.0		Ø12.5:	0.0	0.0	
	Ø16:	0.0	0.0		Ø16:	0.0	0.0	
Total:		502.4	110.4		Total:	31.4	6.9	

PROJETO		PROPRIETARIO	
		COMPANHIA DE TERMINAIS ALFANDEGADOS DO PIAUI CNPJ: 19.045.674/0001-30	
R01	06-02-2026		
R00	19-12-2025		
REV	DATA	DESCRIÇÃO	

		COMPANHIA DE PORTOS, TERMINAIS E HIDROVIAS DO PIAUÍ - PORTO PIAUÍ CNPJ 19.045.674/0001-30 contato@portopiui.com Av de Acesso ao Porto, s/n - Praia de Atalaia - Luis Correia, PI	
Título do Projeto: GALPÃO TPLC		Código do Projeto: TE.LCR.PES00	
Endereço do Serviço: AV. TERESINA, S/N - BAIRRO ATALAIA LUIS CORREIA - PI		Disciplina: <div style="text-align: center;"> EC CCPE </div>	
Conteúdo: PROJETO ESTRUTURAL DO GALPÃO TPLC - VIGAS		Prancha: <div style="text-align: center;"> 03/08 </div>	
Desenho: GABRIEL LIMA	Fase: EXECUTIVO	Escala: INDICADA	Data: JAN/26
		Revisão: REV00	